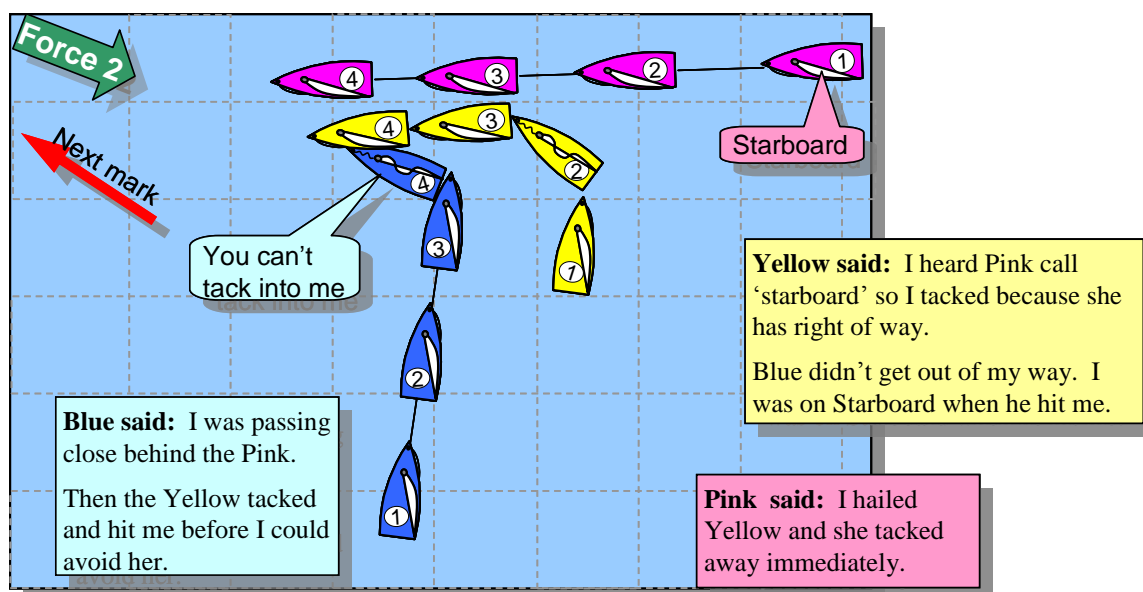


03 You can't tack there ... !

Boats on Starboard tack have right of way over those on Port but as with all rights this comes with its own responsibilities.

Description



Commentary

#	Facts & Rules	RoW
①	Yellow and Pink are on converging courses. As Yellow is on Port she must keep clear under Rule 10 "On opposite tacks". Yellow and Blue are on the same tack and as Blue is clear astern she must keep clear Rule 12 "Same tack, not overlapped".	Pink Yellow
②	As Yellow starts her tack by luffing head to wind, she must still avoid Pink (Rule 10 "On opposite tacks") but maintains rights over Blue (Rule 11 "Same tack overlapped").	Pink Yellow
③	Once Yellow passes head to wind she must keep clear of all other boats (Rule 12 "While tacking"). Blue needn't alter course yet.	Pink Blue
④	Yellow's tack is completed when she reaches her close-hauled course. As she is now on starboard she immediately acquires right-of-way over Blue (Rule 10 "On opposite tacks"). However under Rule 15 "Acquiring right of way" Yellow must allow Blue room to keep clear – she clearly fails to do this.	Pink Yellow

Learning-points

Yellow is right to take avoiding action when Pink calls "starboard" however she has forgotten her responsibility to allow Blue sufficient time to keep clear.

Had Yellow been more aware of the relative positions of all boats she could have called for water to tack or ducked behind Pink – better to lose ½ a boat-length whilst maintaining control than tack into dirty-wind or even risk a collision and penalty-turns.

03 You can't tack there ... !

Facts-Found

Yellow on Port is on a converging course with Pink on Starboard, Blue is a length to windward of Yellow and 1½ lengths astern. Yellow completes her tack to Starboard less than ½ a boat-length in front of Blue. Blue immediately starts to tack but a collision occurs between Blue's bow and Yellow's side near her Port shroud.

Quiz questions

Q03-1) Which statement is a correct answer to the suggestion that "Blue should have anticipated Yellow tacking to Starboard":

- A) Blue doesn't have to start avoiding Yellow until she has completed her tack
- B) This is a "reasonably possible" action under Rule 14 "Avoiding Contact"
- C) Blue would have heard Pink's hail of starboard
- D) Yellow tacked at normal speed

Q03-2) Under what rule should Yellow take a penalty at Position 4:

- A) As windward boat under Rule 11 "On same tack, overlapped"
- B) As Starboard boat under Rule 10 "On Opposite tacks"
- C) As tacking boat under Rule 13 "While tacking"
- D) As right-of-way boat under Rule 15 "Acquiring right of way"

Q03-3) Here are several statements defining when a boat is tacking:

- 1) When she has passed head to wind
- 2) As soon as her jib starts to flap
- 3) Until the helm and crew are in their normal positions on the new tack
- 4) Until she reaches a close-hauled course

which of these are TRUE:

- A) 2 and 4
- B) 1 and 4
- C) 2 and 3
- D) 4 only

Quiz answers

A03-1) A

Under **Rule 12** "While tacking" Yellow must keep clear of all boats. However common-sense says Blue shouldn't push this when she sees a situation developing – if serious damage occurs she could be disqualified under Rule 14 "Avoiding Contact".

A03-2) D

Yellow broke **Rule 15** "Acquiring right of way" by not giving Blue room to keep clear. Subsequently as a result of her failing to give Blue room she also broke **Rule 14** "Avoiding Contact".

A03-3) B

- 1) True – Tack is defined in terms of Windward side; this changes after head-to-wind
- 2) False – The state of the jib is irrelevant; in a good roll-tack it may never flap
- 3) False – Not a rule and not relevant
- 4) True – See words of Rule 13 "While tacking"